

## Become an explorer!

*All around Uppsala there are locations from the days of Linnaeus. Let your curiosity and sense of adventure lead you to the secret hideaways and all the exciting things that await you there!*

In the 18th century, Linnaeus wanted to help his students become bold explorers. He wanted to get the best out of the students' natural curiosity. Teacher and students would gather on the outskirts of what was then Uppsala and together they walked out into nature with great to-do.

They would wear practical clothing in line with the weather, and each student would walk around alone for a while, gathering plants and catching insects and birds. They would then assemble around Linnaeus to show what discoveries they had made. Much of what they found was new to science, and many of the plants, insects and birds discovered by Linnaeus and his students are still around today. You could say that they went on a real treasure hunt!

### THE ULTUNA TRAIL

All throughout the flat landscape that surrounds Uppsala, the memories of the Ice Age remain. Look around for one of the beautiful viewpoints and experience some of the forgotten highlights of the city. Follow the Fyris River valley and the slopes of the esker. At the end of the trail you can walk far into the swamp using a footbridge.

### CALL LINNAEUS!

Anytime during your quest for the secret locations you can call Linnaeus on +4618-44 44 810. He will be your trusted guide along the way. There is a code at each spot marked with an X. What do you think Linnaeus will tell you?

### WEBSITE

You can find out more about all of the eight Herbariones Upsalienses in the vicinity of Uppsala at [www.linnestigarna.se](http://www.linnestigarna.se). The site also provides you with practical information and further reading on the Herbariones Upsalienses.



Naturkartan

Download the app **Naturkartan** [Nature map], it will help you during your visit to the Herbariones Upsalienses.

### BIOTOPIA

At Biotopia you can borrow a GPS. There is also an exhibition about the animals and nature of Uppland and information about the areas surrounding Uppsala. If you have any questions regarding the Quest for Linnaeus' Secret Hideaways, please contact Biotopia at [info@biotopia.nu](mailto:info@biotopia.nu) or phone +4618-727 63 70. More information about Biotopia can be found at [www.biotopia.nu](http://www.biotopia.nu).

### PRACTICAL INFORMATION

If you want to walk the entire trail, it is 7 kilometres long. It takes you along marked paths and bike lanes. The trail also passes through the campus of SLU (the university of agricultural science). It is a good idea to put on your walking shoes for this trail. And hey, don't forget your refreshments! These sites are exciting discoveries for treasure hunters and others alike. You do not have to walk the entire trail at once, it is just as fun to visit one site at a time. It's also easy to cycle a large part of the way.

## THE ULTUNA TRAIL

*-one of eight Linnaeus paths*

*You can be the adventurer who finds the treasure!*

Illustrator: Jonas Lundquist. Graphic design: Infomedia Uppsala kommun 2014. 565572



BIOTOPIA

I samarbete med  
*Linne's Historiska Landskap*



*The Quest for Linnaeus  
Secret Hideaways*

The tracks of the Linnaeus trails are developed by Linnaean Landscapes out from data in historical documents. The Uppsala municipality is thankful to the Linnean Society of London who contributed with the medallion for signs and folders.

THIS IS HOW YOU LOOK FOR THE TREASURE

IN ORDER to find the hidden treasure you will need a GPS. A GPS can also help you locate the places along the trail that are marked with an X. You can borrow a GPS at Biotopia.

START OFF BY finding your way to the first location. You can find the coordinates for all the locations on the map on the back. By searching for information at the location you will find clues to the answer to the question. Then carry on to each location marked with an X on the map.

THE RIGHT ANSWER to a question will give some of the numbers in the coordinates for the secret treasure. Write the numbers down here below in the same order as the questions are numbered on the map. Together, they will form the coordinates for the treasure. Good luck!

LONGITUDE: N <sup>°</sup>

LATITUDE: E <sup>°</sup>

A CLUE TO finding the treasure:  
SBYYBJ GUR OEVQTR

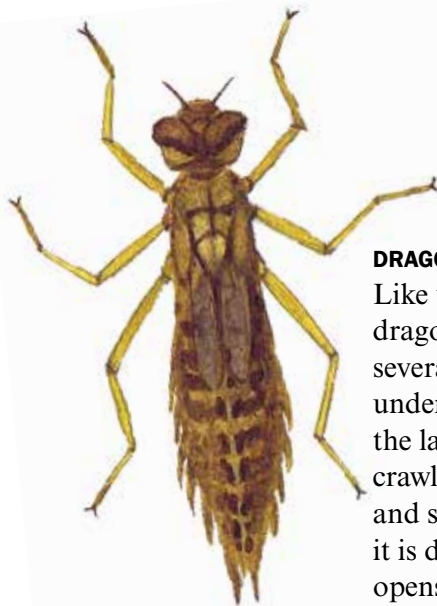
Code for decrypting

A	B	C	D	E	F	G	H	I	J	K	L	M
=	=	=	=	=	=	=	=	=	=	=	=	=
N	O	P	Q	R	S	T	U	V	W	X	Y	Z

We are using the coordinate system WGS84.

WATER-STICK INSECT

If you brought along a scoop net, you can attempt to catch a water-stick insect. They lurk under the water with their breathing tube at the surface. When an unsuspecting prey swims by, the water-stick insect strikes in the flash of a second.



DRAGONFLY LARVAE

Like ugly ducklings, the dragonfly larvae live several years hidden under the surface. When the larva is ready it crawls out of the water and sits on a reed. Once it is dried by the sun, it opens up and out comes a beautiful metallic shimmering dragonfly!

YELLOW IRIS

Discover one of Sweden's largest flowers! In the pre-summer warmth, bumble bees are tempted to lift the lid in order to reach its sugary nectar.



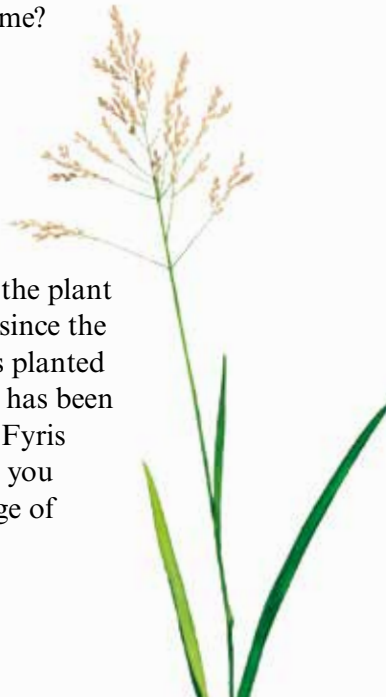
COMMON CLUB-RUSH

Look for the club-rush along the edge of the water. In the past, children would often use bunches of club-rush as water wings. Wouldn't you like to try it some time?



REED SWEET-GRASS

Search for traces of the plant that ran away! Ever since the reed sweet-grass was planted outside of Ultuna it has been spreading along the Fyris River. Do you think you can spot it at the edge of the water?







## THE ULTUNA TRAIL



BIOTOPIA



DOMKYRKAN



SLOTTET

N 59° 51.210' E 17° 38.316'

### 1. Slottstullen

(A toll gate)

When Linnaeus was alive, this was the edge of Uppsala. Today it will mark the beginning of your adventure.

What did the professors use to cultivate here?

- 1. Carrots (55)
- X. Tobacco (60)
- 2. Hops (59)



N 59° 50.698' E 17° 38.746'

### 2. Kronåsen

Overturn time and space. Now there are tall pine trees growing here, but it used to be an open meadow.

Whose droppings are not depicted here?

- 1. The hare (41)
- X. The deer (43)
- 2. The red-backed vole (48)

N 59° 50.228' E 17° 39.449'

### 3. Gamla vindbrofästet

Linnaeus would pass here when he went by boat to Stockholm.

Which plant did Linnaeus find on Kungsängen?

- 1. Yellow Iris (259)
- X. Fritillary (272)
- 2. Crown Imperials (301)

N 59° 49.597' E 17° 39.673'

### 4. Ultunaåsen

Let the Ice Age present you with the view. At the edge of the esker you can see far across the muddy landscape.

What began to roll in 1866?

- 1. Carl von Linné (20)
- X. The railway (17)
- 2. Uppsala municipality (11)

N 59° 48.980' E 17° 39.859'

### 5. ullbo

In between the houses at the Swedish University of Agricultural Sciences you can see the remains from an 18th century mansion, including an old pond.

When where the nearby graves built?

- 1. In the Stone Age (38)
- X. In the Bronze Age (40)
- 2. In the Middle Ages (33)

N 59° 48.265' E 17° 40.003'

### 6. Sunnerstaspången

Make your way towards the water surface underneath it is teeming with life. Take the footbridge out into the swamp!

Which plant has been introduced here?

- 1. Thrift (003)
- X. Common pasque flower (037)
- 2. Reed sweet-grass (012)

0 250 500 750 1000 m



Årike Fyris naturreservat

